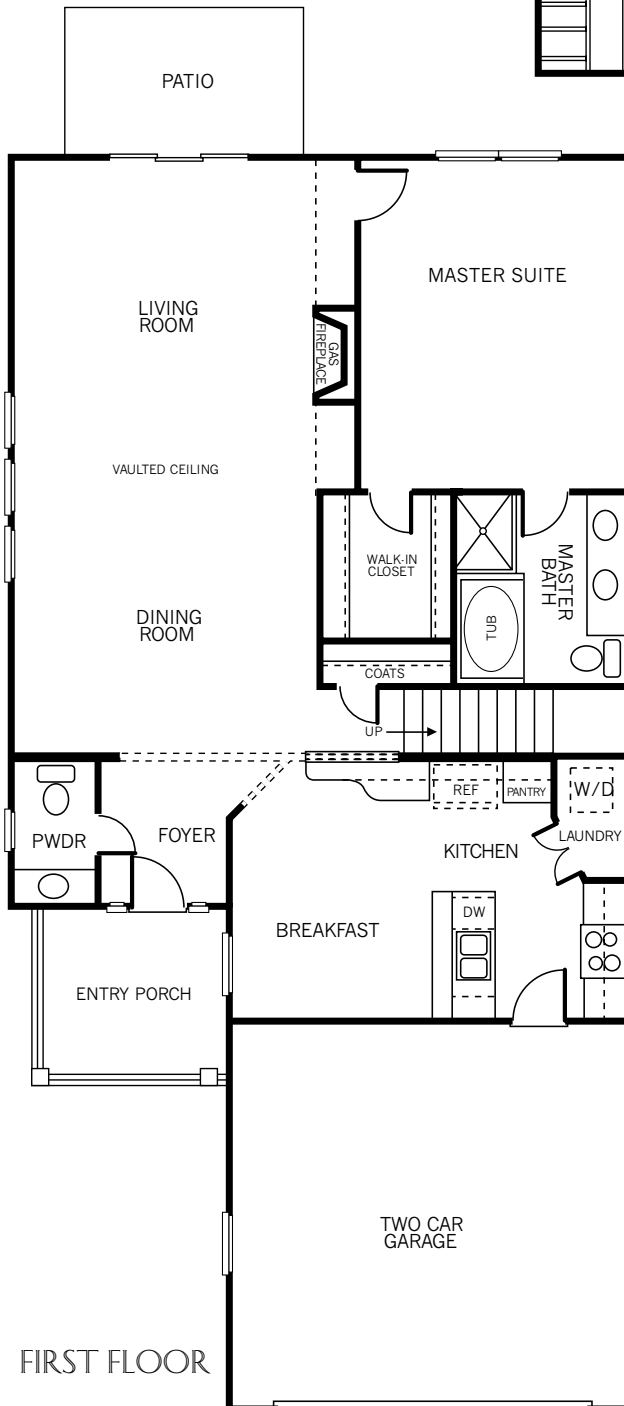
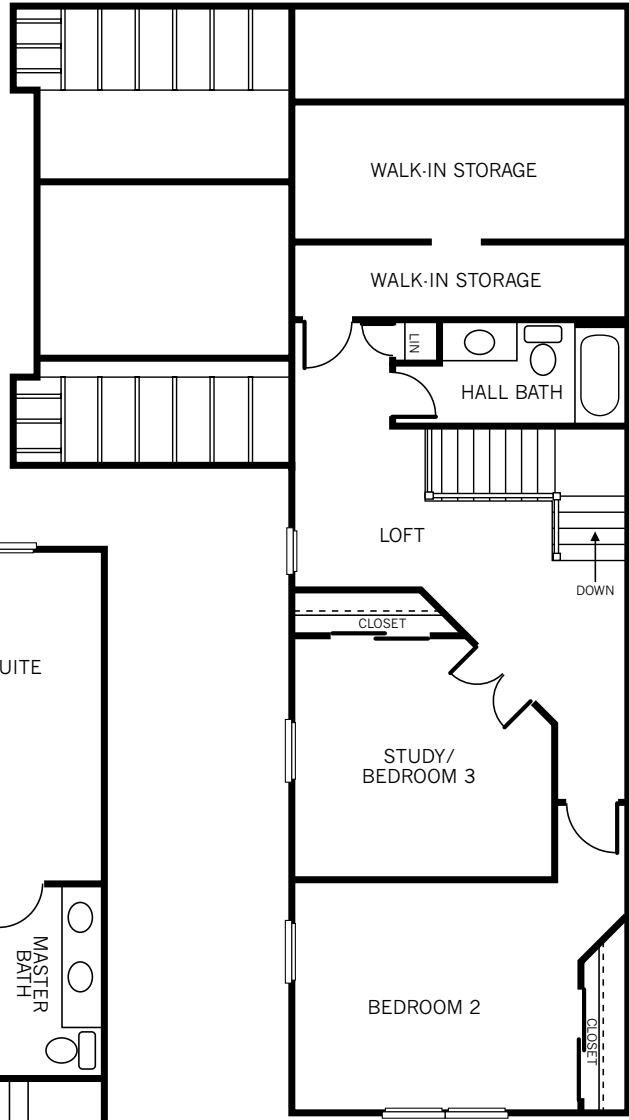


THE FAIRMONT

LEFT ENTRY



FIRST FLOOR



SECOND FLOOR

CHELSEA PLACE

CONDOMINIUM
IN HISTORIC PRINCESS ANNE

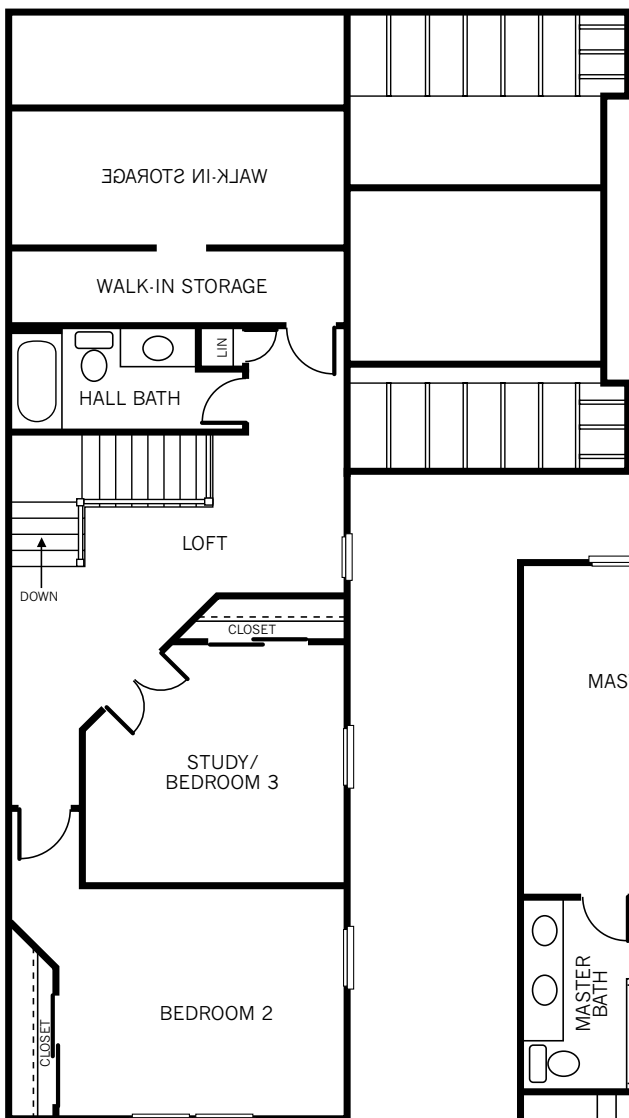
Minor room size variations and reversed floor plans are subject to field conditions. Prices and specifications are based on the latest possible information available at the time of publication approval. Seller reserves the right to make changes at any time without notice in specifications, prices, materials, colors, equipment, and models.

Copyright 2005 Royal Court, Inc.

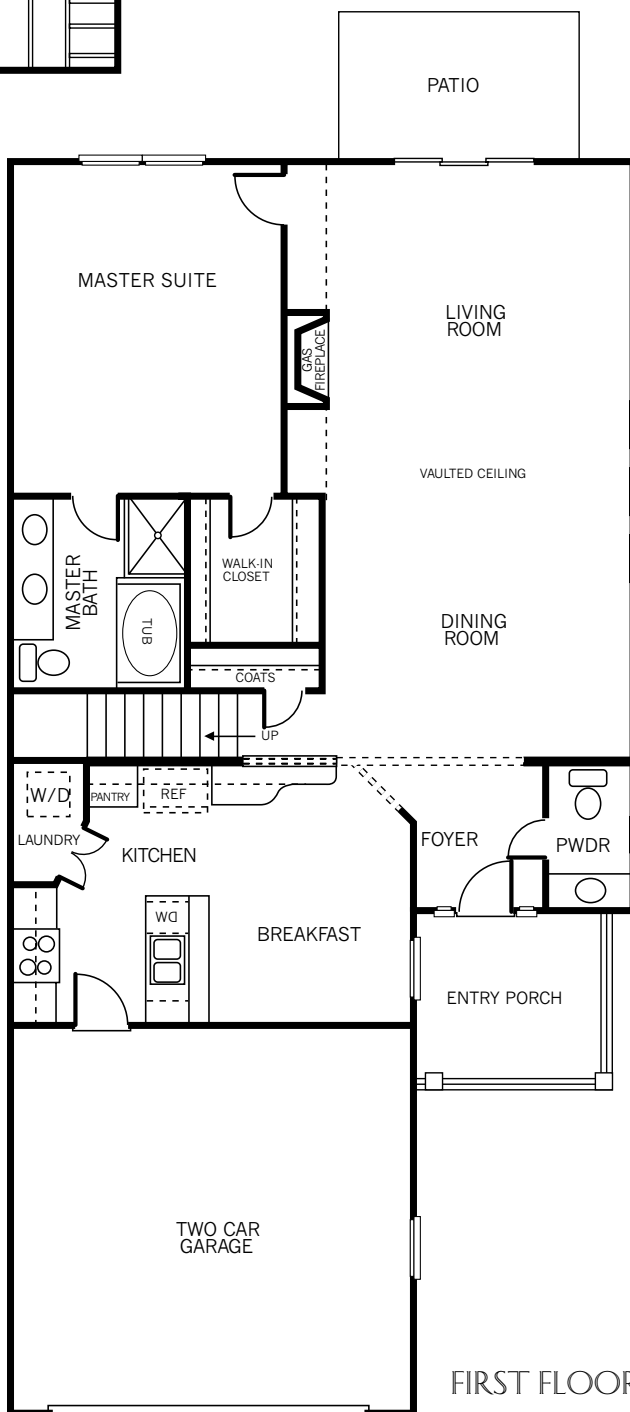




THE
FAIRMONT
RIGHT ENTRY



SECOND FLOOR



FIRST FLOOR



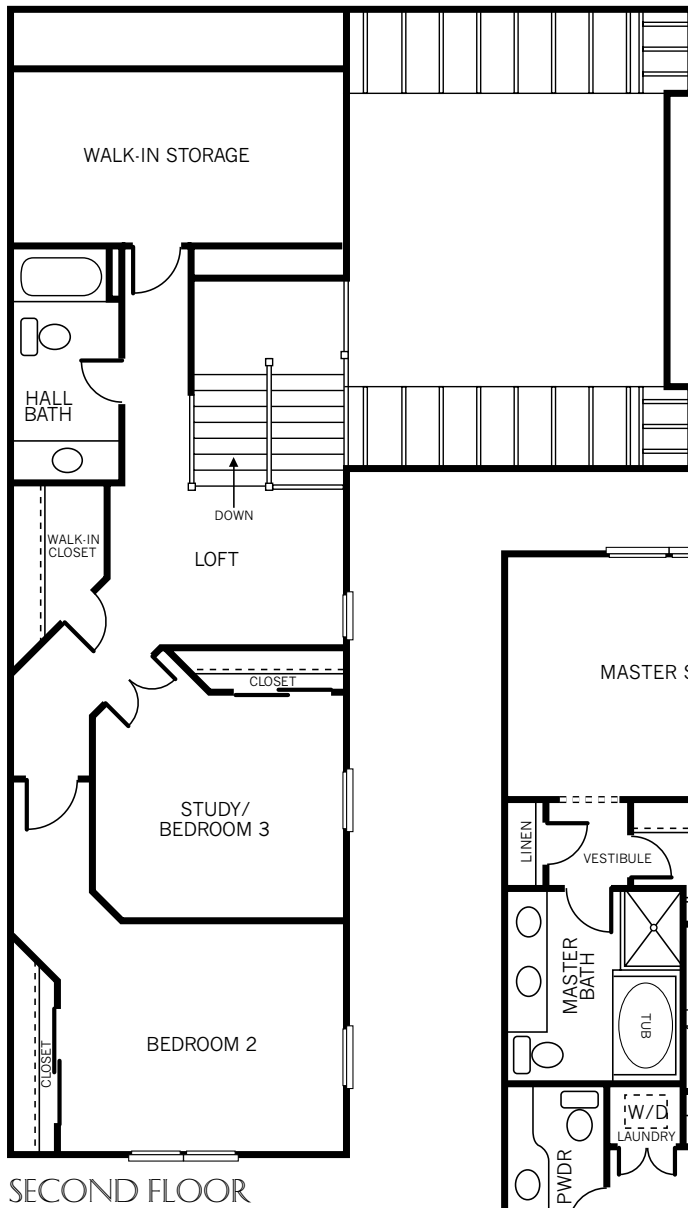
CHELSEA
PLACE
CONDOMINIUM
IN HISTORIC PRINCESS ANNE

Minor room size variations and reversed floor plans are subject to field conditions. Prices and specifications are based on the latest possible information available at the time of publication approval. Seller reserves the right to make changes at any time without notice in specifications, prices, materials, colors, equipment, and models.

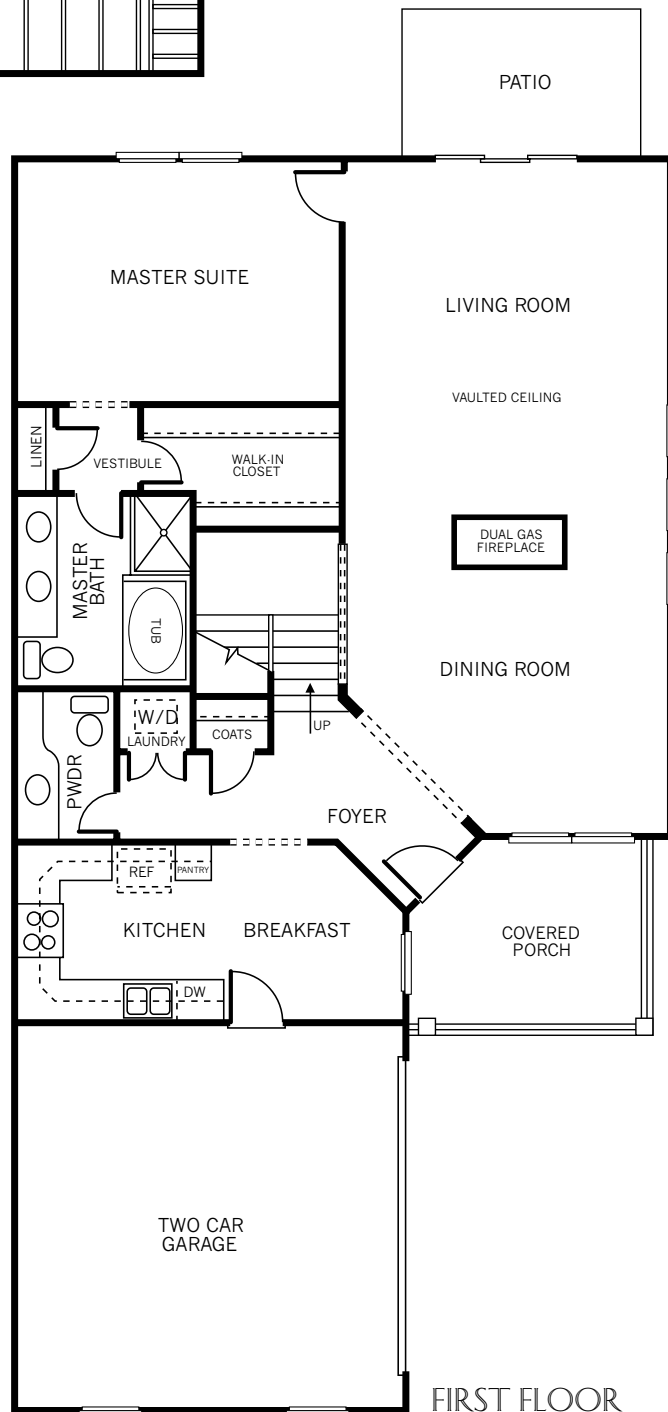
Copyright 2005 Royal Court, Inc.



THE SAVANNAH
RIGHT ENTRY



SECOND FLOOR



FIRST FLOOR

CHELSEA PLACE
CONDOMINIUM
IN HISTORIC PRINCESS ANNE

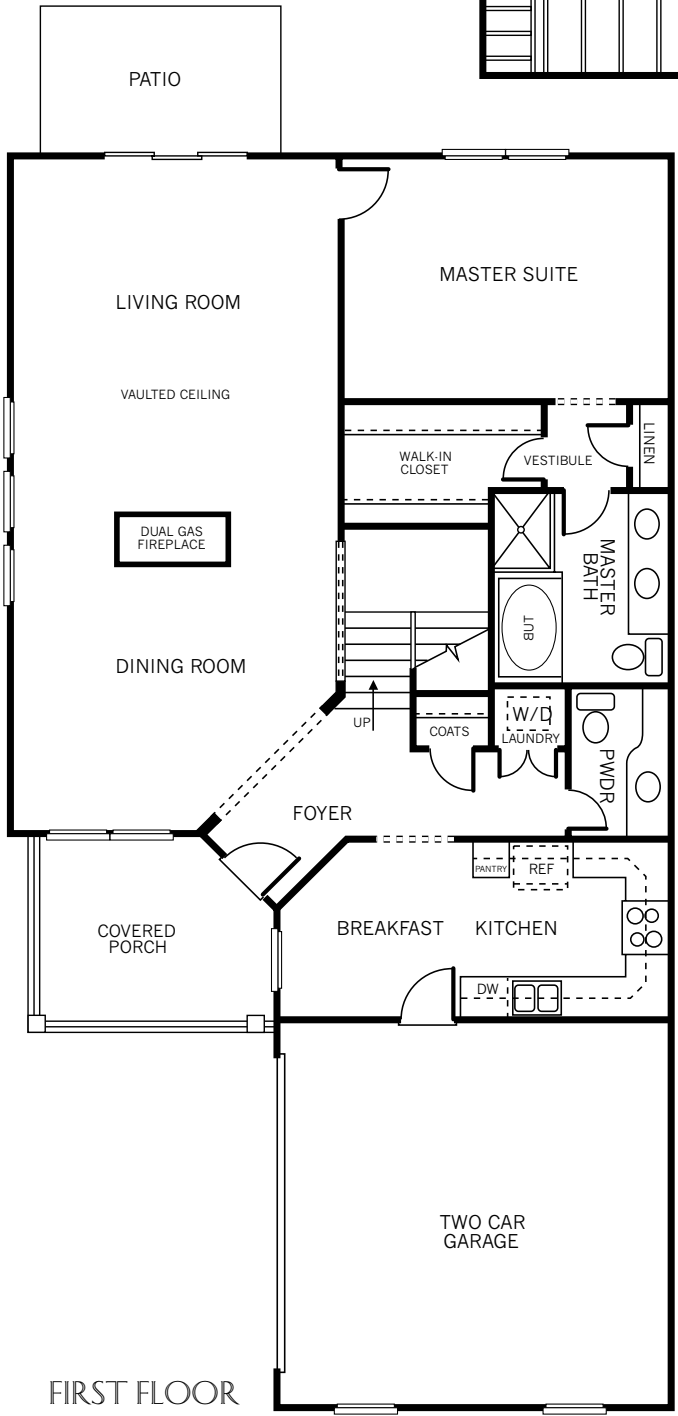
Minor room size variations and reversed floor plans are subject to field conditions. Prices and specifications are based on the latest possible information available at the time of publication approval. Seller reserves the right to make changes at any time without notice in specifications, prices, materials, colors, equipment, and models.

Copyright 2005 Royal Court, Inc.

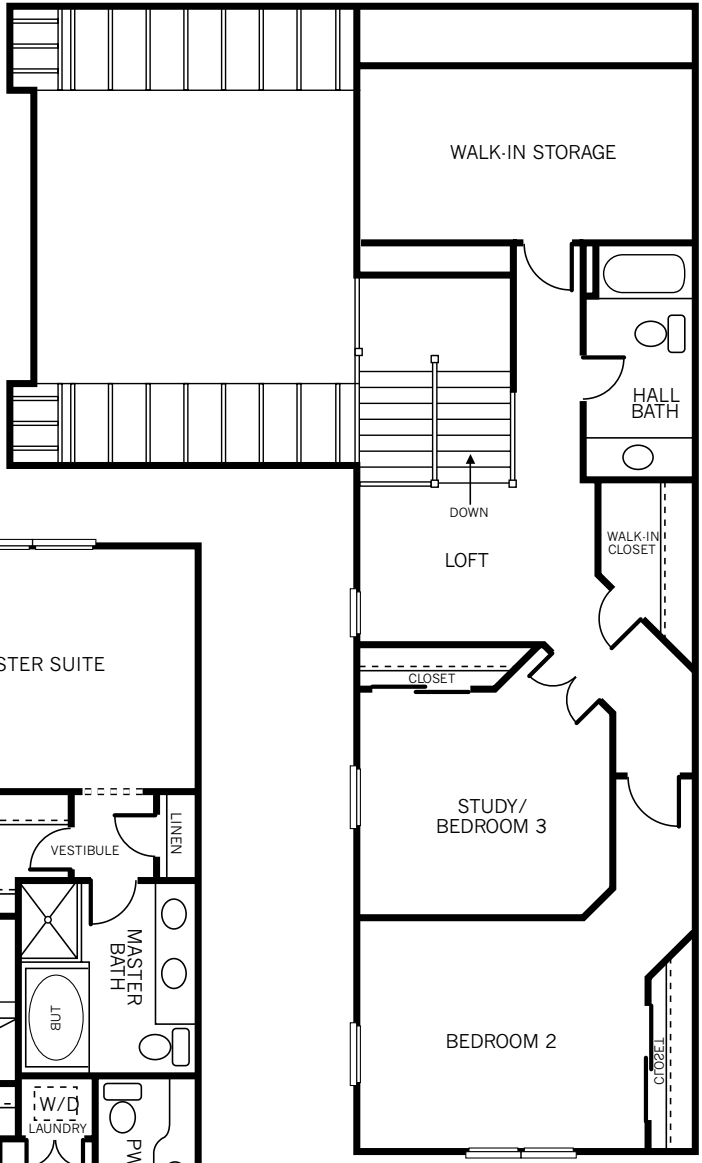


THE SAVANNAH

LEFT ENTRY



FIRST FLOOR



SECOND FLOOR

CHELSEA PLACE

CONDOMINIUM
IN HISTORIC PRINCESS ANNE

Minor room size variations and reversed floor plans are subject to field conditions. Prices and specifications are based on the latest possible information available at the time of publication approval. Seller reserves the right to make changes at any time without notice in specifications, prices, materials, colors, equipment, and models.

Copyright 2005 Royal Court, Inc.

